



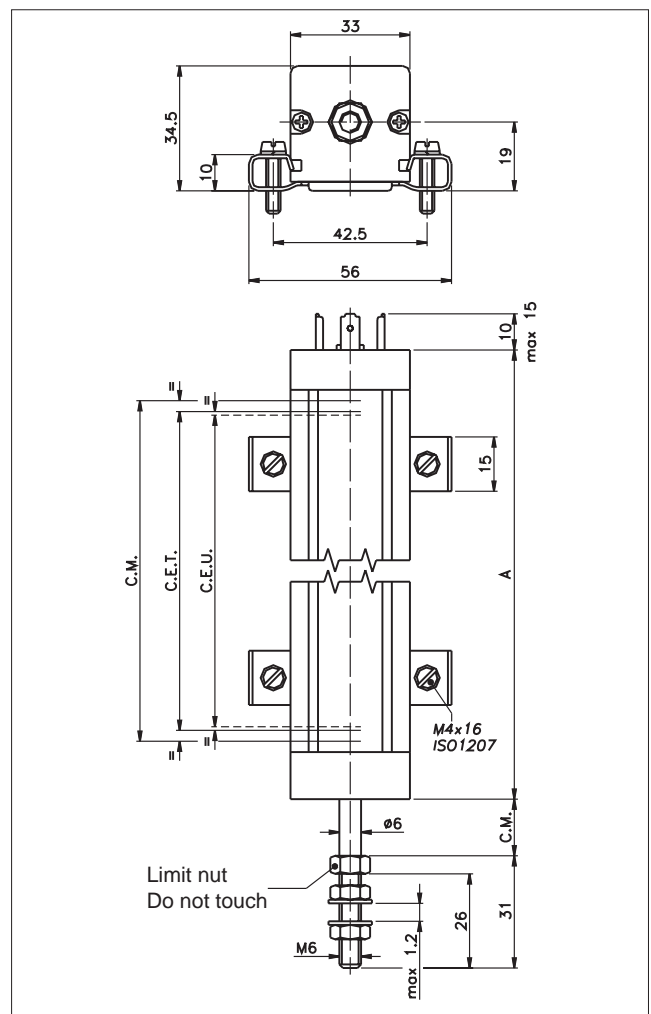
Main features

- 50 to 900 mm stroke.
- Mechanical linkage using M6 thread
- Independent linearity $\pm 0,05\%$
- Repetibility 0,01 mm.
- Infinite resolution
- No variation of electrical signal outside theoretical electrical stroke
- Displacement speed up to 5 m/s (optional 10m/s)
- Working temperature: $-30...+100^{\circ}\text{C}$
- Electrical connections:
 - LT H 3 pole connector
 - LT M 4 pole connector to standard DIN43650 ISO4400
 - LT B 5 pole connector DIN43322
 - LT F 3 pole screened cable (1m length).
- Life duration: $> 25 \times 10^6$ meters or $> 100 \times 10^6$ operations whichever is the smaller (within C.E.U.)
- Grade of protection IP60 (optional IP65)
- Suitable for use in explosive environments with presence of gas (groups IIA, IIB, IIC) and combustible powders. Standards for simple device: ATEX CEI EN 50020 2003 - paragraph 5.4 a

TECHNICAL DATA

Useful electrical stroke (C.E.U.)	50/75/100/130/150/175/200/225/275/300/350/375/400/450/500/600/650/750/900
Independent linearity (within C.E.U.)	$\pm 0,05\%$
Displacement speed	Standard ≤ 5 m/s (optional ≤ 10 m/s)
Displacement force	$\leq 2\text{N}$ Version IP60 $\leq 10\text{N}$ Version IP65
Vibrations	5...2000Hz, $A_{\text{max}} = 0,75$ mm $a_{\text{max}} = 20$ g
Shock	50 g, 11ms.
Operative acceleration	200 m/s^2 max (20g)
Tolerance on resistance	$\pm 20\%$
Recommended cursor current	$< 0,1 \mu\text{A}$
Maximum cursor current	10mA
Maximum applicable voltage	60V
Electrical isolation	$> 100\text{M}\Omega$ at 500V~, 1bar, 2s
Dielectric strength	$< 100 \mu\text{A}$ at 500V~, 50Hz, 2s, 1bar
Dissipation at 40°C (0W at 120°C)	3W
Actual Temperature Coefficient of the output voltage	$< 1,5\text{ppm}/^{\circ}\text{C}$
Working temperature	$-30...+100^{\circ}\text{C}$
Storage temperature	$-50...+120^{\circ}\text{C}$
Case material	Anodised aluminium Nylon 66 G25
Control rod material	Stainless steel AISI 303
Fixing	Brackets with variable longitudinal axis

MECHANICAL DIMENSIONS

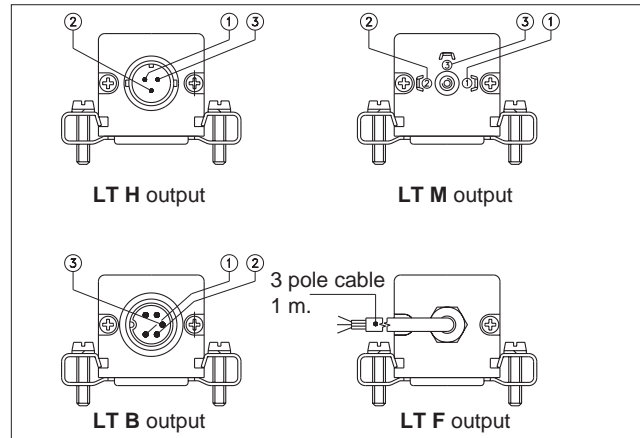
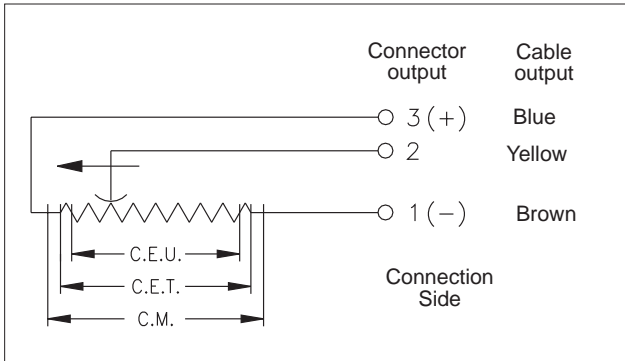


Important: all the data reported in the catalogue linearity, lifetime, temperature coefficient are valid for a sensor utilization as a ratiometric device with a max current across the cursor $I_c \leq 0.1 \mu\text{A}$.

MECHANICAL / ELECTRICAL DATA

MODEL		50	75	100	130	150	175	200	225	275	300	350	375	400	450	500	600	650	750	900
Useful electrical stroke (C.E.U.) +3/-0	mm	50	75	100	130	150	175	200	225	275	300	350	375	400	450	500	600	650	750	900
Theoretical electrical stroke (C.E.T.) ±1	mm	C.E.U. + 3						C.E.U. + 4				355,6	380	406	457	508	609	660	762	914
Resistance (C.E.T.)	kΩ	5						5				5	5	5	5	5	5	5	10	10
Mechanical stroke (C.M.)	mm	C.E.U. + 9						C.E.U. + 10				361	386	412	463	518	619	670	772	924
Case length (A)	mm	C.E.U. + 62						C.E.U. + 63				414	439	465	516	571	672	723	825	977

ELECTRICAL CONNECTIONS



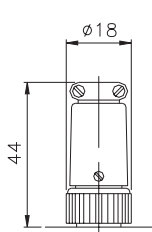
ACCESSORIES

STANDARD ACCESSORIES

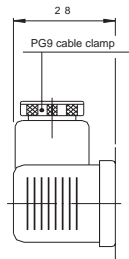
Fixing kit for LT: 2 brackets, screws, grower

Code

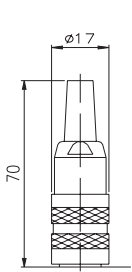
PKIT009



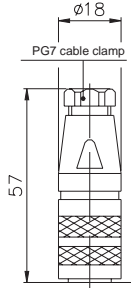
CON002 - IP40 Protection
(3 pole Female connector)



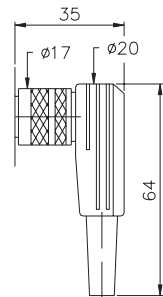
CON006 - IP65 Protection
(DIN43650 4 pole Female connector)



CON011- IP40 Prot.
(DIN43322 - 5 pole Female conn.)



CON012- IP67 Prot.
(DIN43322 - 5 pole Female conn.)

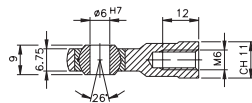
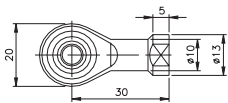


CON013- IP40 Prot.
(DIN43322 - 5 pole Female conn.)

Extraction length of the connector 10mm.

Coupling ball-joint

PKIT 015



ORDER CODE

Displacement transducer

LT

3 pole connector output	H
4 pole connector output DIN43650 ISO4400	M
5 pole connector output DIN43322	B
3 pole PVC cable output 3x0,25 1m	F

Model

Standard version IP60	S
Version IP65	P

If requested, it is possible to supply models with non-standard mechanical and/or electrical features

Example: LT - M - 275 - S

Displacement transducer model LT, 4 pole connector output
DIN 43650 - ISO 4400, useful electrical stroke (C.E.U.)
275mm, standard version IP60.

GEFRAN spa reserves the right to make any kind of design or functional modification at any moment without prior notice

GEFRAN

GEFRAN spa

via Sebina, 74

25050 PROVAGLIO D'ISEO (BS) - ITALIA

ph. 0309888.1 - fax. 0309839063

Internet: <http://www.gefran.com>

cod. LT-04/05