

HWD15



Battery powered Measuring System

HWD15 Battery powered Measuring System

General: The HWD15 has a 20 mm sleeve shaft and is directly attached on the spindle. The position is recorded by the integrated sensor technology and is indicated on the LCD-display. The housing has a stable back board with flange possibility and torque support. The sleeve shaft moves in a maintenance-free slide bearing. The extensive basic functions allow a multifunctional usage. To emphasize especially is the easy pulse rate adjustment (standard 1250 P/R). With a top quality commercial 1.5 V battery of size C the HWD15 works up to 12 months in permanent operation.

Product features:

- Easy handling and mounting
- Up to 12 months in continuous operation
- Abrasion free
- Monitoring of battery status

Applications

- Manual and motor adjustment units
- Valve adjustments
- Wrapping fixture
- Measuring value indicator for hand wheels



Mounting: Put the HWD in that way on the shaft, that the M4 pin screws fit into the prepared fixation drills. Fix the HWD 15 on the shaft by correspondingly tightening up the slugs, provided with 2 mm socket, which are laterally fastened onto the hollow shaft. Finally fix the two M4 pin screws with the adequate nuts.

Modulation to the spindle: Calculate the impulse scaling factor corresponding to the spindle pitch according to the following scheme:

- Spindle pitch/1250 Example: 5 mm, pitch: $50/1250 = 0,04$
- List the charged factor into the register No. 8



Application „Handwheel“

Register list (Registers without function will be skipped)

Basic adjustment			
P 01	X X		
		0 = Counting direction (+)	01
		1 = Counting direction (-)	
		0 = mm	
		1 = Inch	
P 05	Function keys	X X	00
		0 = Key „Set“ active	
		1 = Key „Set“ inactive	
		0 = Key inching active	
		1 = Key inching inactive	
P 08	Scaling factor	0,0001 to 9,9999 1,0000	
P 09	Reference value		0,0
P 99	Version	actual SV and V-No. Is displayed	

Technical specifications:

Resolution	0, 1 mm
Stock temperature	0-70° C
Humidity	Non condensing, max. 80%
Display (+/-)	LCD, 8 mm, 6 segments, 7 decades incl. sign
Power supply	1,5 V DC (built-in battery)
Consumption	< 1 mA (bei 1,5 V)
Keyboard	Membrane keypad
Protection class	IP 43 (mounted)
Operation temperature	+5 to + 50 °C
Dimensions	W x H x T = 72 x 114 x 61,5 mm
Shaft diameter	20 mm
Axial load	Max. 20N
Radial load	Max. 200N

Order reference:

For orders, please use the following order code:

HWD15 - -
 A A A B B B

- A Version
000 ELGO standard
001 First special version
- B Power supply
001 1,5V DC, Battery-operated

For Example:

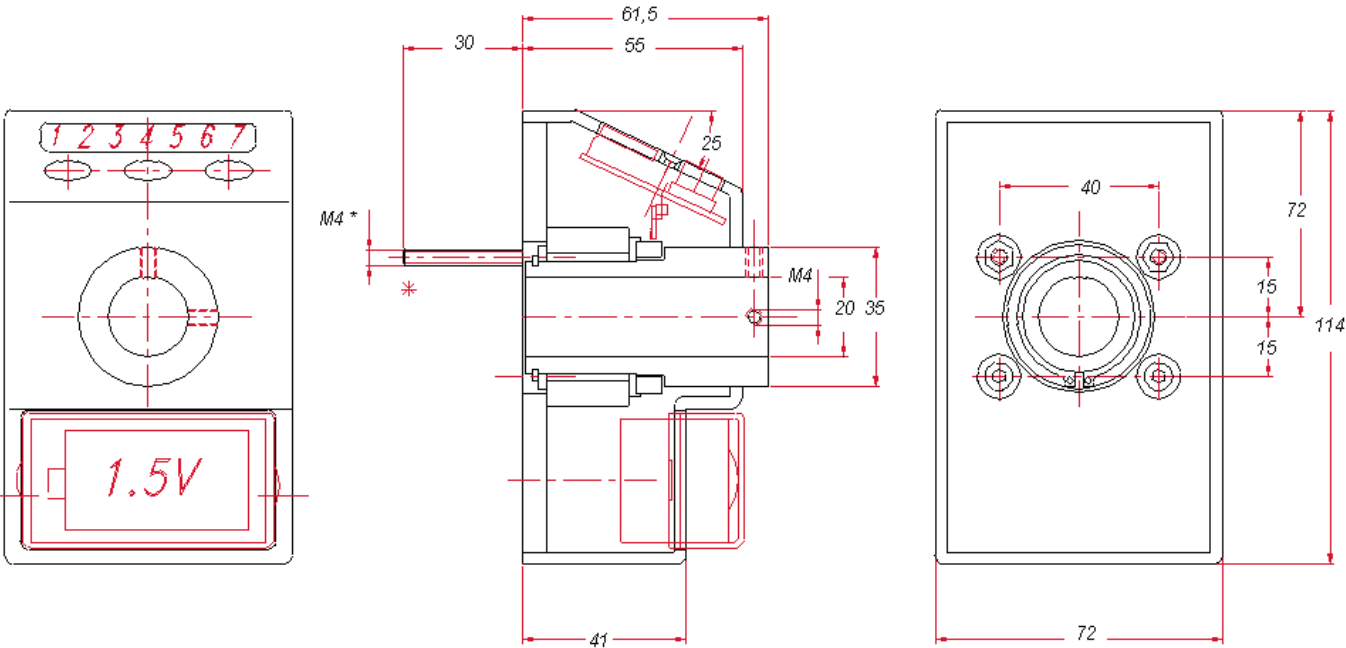
HWD15 - 000 - 001
 A A A - B B B

HWD15 ELGO standard with a 1,5V DC battery.

Your order:

HWD15 - -
 A A A B B B

Dimensions:



Doc.-No. 799000401
HWD15-E_48-08

Subject to modifications - © 2008 - ELGO Electronic GmbH & Co. KG

ELGO Electronic GmbH & Co. KG
Measure - Control - Position

Carl - Benz - Straße 1, D-78239 Rielasingen
Fon: +49 (7731) 9339-0, Fax: +49 (7731) 28803
Internet: www.elgo.de. Mail: info@elgo.de

